



FM-300 PANEL SYSTEM KD-Steel Pump House



BEVERAGES
Bordentown, NJ 08505



With FM-300 (75mm) Exterior Wall Panel Systems for Equipment and Storage Buildings
Supplied and Designed By: Johnson Building Systems, Inc.
975 Jaymor Rd - Southampton, PA 18966-3854

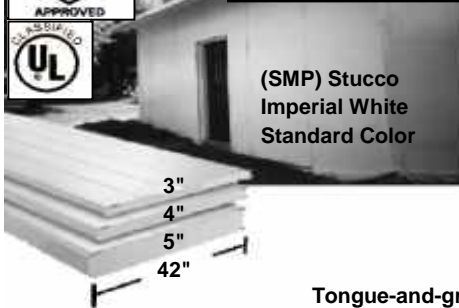
Tel: 800-445-7249 or (215) 673-6050 Fax: (215) 322-2076 Member: www.JohnsonEnergyGroup.com



URETHANE FOAM INSULATED WALL AND ROOF PANEL SYSTEMS



BEST "FM/UL CLASS 1" PANELS FOR SYSTEMS



(SMP) Stucco
Imperial White
Standard Color

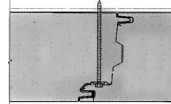
3"
4"
5"
42"

Model/Thickness	R-Value	STC
FM 300 - 3.00"	R-24	22
FM 400 - 4.00"	R-32	23
FM 500 - 5.00"	R-40	24



Factory Caulk on Ambient Side
with Non-Drying Butyl

Tongue-and-groove joint with
air-tight integral connection
for interior and exterior applications.



**STOP INFILTRATION
AND AIR LEAKAGE**



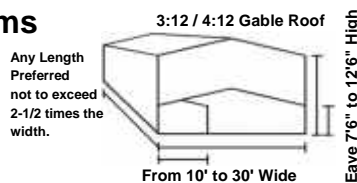
KD-STEEL EQUIPMENT AND WAREHOUSE STRUCTURES

Solid Core Insulated Building Packages

Engineered Tubular Steel Building Systems

2" x 3" Tube GV SERIES

Steel frames are 4/5" o.c., designed and engineered to meet or exceed the load requirements by most building codes. Our 12' x 20' x 8' frame is engineered for 40 lb. Snow load and 90 mph wind load with no bracing. With bracing we can go to 16' high by 30' wide and as long as required.



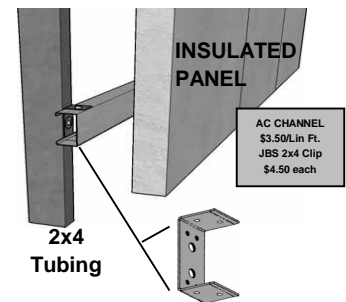
Any Length Preferred not to exceed 2-1/2 times the width.

Standard KD-Building Packages are simple to ship or even put in the back of a utility truck.



(Frame Packages are Max 8' long.)
Local Delivery is available.

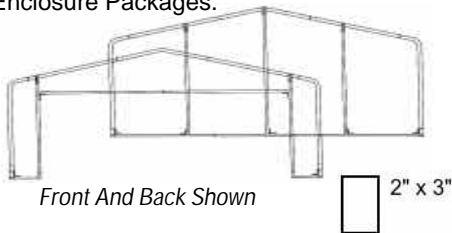
HD GIRTS AND PURLINS 2" X 4" A-C CHANNEL AND CLIPS



A-C CHANNEL
\$3.50/Lin Ft.
JBS 2x4 Clip
\$4.50 each

Standard Frame

Enclosure Packages.



Front And Back Shown

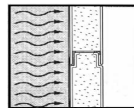
2" x 3"



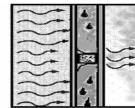
Sleeve Connection 4" to 6":

Most of the KD-Structure is easily put together using this system making any installation quick and simple. Just insert the tubing where it belongs and tek screw them together.

Preferred
Solid Core Construction



Ordinary Stick Construction



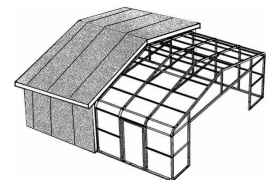
SOLID CORE STRUCTURAL INSULATED PANELS

No sagging insulation, Purlins and Girts do not compress insulation and reduce R-value, No air infiltration, Guaranteed Savings on your utility bills.

Options Available

Girt/Purlin Packages, Building Enclosures, Bracing Packages, Height and Length Extensions Available.

The Precision joint connection has a thermal lock tongue and groove design. The fastener shall positively connect the interior face sheet of the panel.



Size	Prod.#	Lbs. Frame Only	Standard Frame Package	Additional Height Extension (10pcs p/pkg) (add 2 pcs for each 4/5' extension)	Brace Package (5 Braces Std.) Add 1 Brace for each 4/5' Length
10' x 10'	SW-1	445	\$699		
10' x 15'	SW-5	470	\$799		
10' x 20'	SW-10	495	\$1,036		
12' x 20'	SW-12	525	\$1,082		
14' x 20'	SW-14	555	\$1,188	1'	\$111
18' x 20'	DW-18	615	\$1,320	2'	\$221
20' x 20'	DW-20	645	\$1,352	3'	\$330
24' x 20'	DW-24	705	\$1,551	4'	\$442
30' x 20'	DW-30	775	\$1,782	5'	\$553



Budget Net Prices In Stock F.O.B. Southampton, PA.