



Liberty Bell - Philadelphia, PA Temporary Security Building 21'x102'x11'6" Fresh Air Station

February 2006



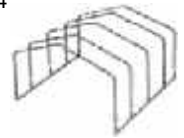
(3) 20' x 20' (2) 10' x 20'
Standard KD-Building Packages
Simple to Ship or even put in the
back of a utility truck



(Frame Packages are Max 8' Long)
Local Delivery Available



Frame Package:
2" x 3" - 14 Gauge Galvanized
Steel Tube Frame
From 7'6" to 14'
Eave Height
Building



Roof Pitch
1,2,3 & 4:12 Available

PRE-FAB SOLID CORE



BUILDING ENVELOPE



SLEEVE CONNECTION 4" TO 6"

KD-Structure is easily put
together using this
system making
installation quick
and simple



GALVANIZED SUB GIRTS



SG1-20' - 1/2" X 3.5" 18 ga.
SG2-20' - 3/4" X 3.5" 16 ga.
SG3-20' - 1-1/2" X 3.5" 16 ga.



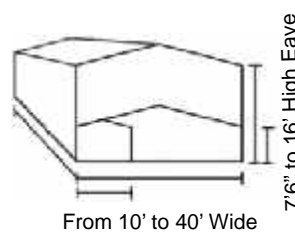
**STOP INFILTRATION
AND AIR LEAKAGE**



UNIVERSAL 4" R-18

2" X 3" & 2" X 4" Tube GV Series
Engineered Tubular
Steel Framing Systems
40# Snow
90 mph Wind (Standard)

Available Wind Loads up to:
120 mph Constant
3 Second Gust - 130 mph



Johnson Building Systems, Inc.
975 Jaymor Rd.
Southampton, PA 18966-3854
215-673-6050 or Fax: 215-322-2076
www.JohnsonBuildingSystems.com



KD-STEEL STRUCTURES

BY JOHNSON BUILDING SYSTEMS

SUPPLY AND DESIGN
SHIP AND ERECT ANYWHERE

1-800-445-7249



PERFORM GUARD
TERMITE RESISTANT

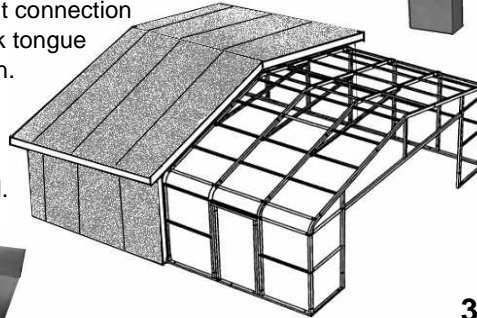
UNIVERSAL 275/400/500/600 INSULATED WALL AND ROOF PANEL SYSTEMS

The Universal 4" (100mm) 5" (125mm) 6" (150mm) panels are excellent for exterior and interior wall partition and ceiling system, and most applicable for exterior use with proper caulking and trim. Panel faces are shallow 3/4" wide profile 4" o.c., with a standard stucco embossed white finish, formed of .019" AZ50 Galvalume or 26 Ga. conforming to ASTM A653/792, with Standard Solid Core of EPS - Expanded Polystyrene insulation treated to resist termites and carpenter ants with a pest control agent (Borate) that does not degrade with time. Cut to actual lengths as required in continuous line factory process, chemically welded to 2 lb. density EPS insulated core, with a protective metal shield.



**COMMERCIAL • LIGHT INDUSTRIAL
RESIDENTIAL • GARAGE
SHOP • STORAGE**
Economical Panel for KD-Steel Structures Horizontal or Vertical Panel Installation.

The Precision joint connection has a thermal lock tongue and groove design. The fastener shall positively connect the interior face sheet of the panel.



2x4 Tubing

INSULATED PANEL

Eave 10' to 16' High

14 Ga. 2" x 3" Available 2" x 4"



.120" WHITE ALUMINUM BASE CHANNEL & ANGLE



4" A-44 X 16' 3" A-46 X 16'

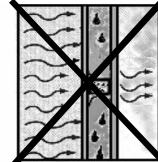
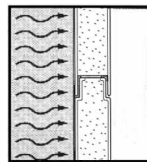


Standard KD Tubular Frame 8' Building Packages are simple to ship crated or even put in the back of a utility truck.

EASY TO BUILD with readily available tools and equipment for ease of construction. Install in days not months.

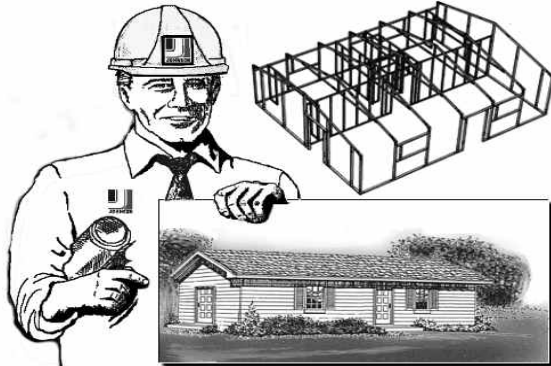
Preferred Solid Core Construction

Ordinary Stick Construction



SOLID CORE STRUCTURAL INSULATED PANELS

No sagging insulation, Purlins and Girts do not compress insulation and reduce R-value, No air infiltration, Guaranteed Savings on your utility bills.



21' x 62' (1300 sq.ft.) START-R-HOUSE

KD-Steel Tubular 3:12 Frame System

Net Price / Sq. Ft.

8' High Eave Frame Buildings						
		Length (Ft)				
		20	30	40	50	60
Width (Ft)	10	\$9.70	\$9.00	\$8.60	\$8.50	\$8.35
	12	\$9.70	\$8.60	\$8.05	\$7.80	\$7.60
	14	\$9.00	\$7.95	\$7.30	\$7.05	\$6.75
	16	\$8.90	\$7.70	\$7.05	\$6.75	\$6.50
	18	\$8.60	\$7.30	\$6.75	\$6.40	\$6.10
	20	\$8.50	\$7.30	\$6.60	\$6.40	\$6.10
24	\$8.50	\$7.30	\$6.60	\$6.25	\$5.95	
30	\$8.35	\$7.05	\$6.25	\$5.85	\$5.70	
10' High Eave Frame Buildings						
		Length (Ft)				
		20	30	40	50	60
Width (Ft)	10	\$10.45	\$9.25	\$8.85	\$8.60	\$8.50
	12	\$10.45	\$8.90	\$8.20	\$7.80	\$7.70
	14	\$10.20	\$8.05	\$7.40	\$7.15	\$6.85
	16	\$9.25	\$7.80	\$7.15	\$6.75	\$6.50
	18	\$8.90	\$7.40	\$6.75	\$6.40	\$6.10
	20	\$9.00	\$7.40	\$6.75	\$6.50	\$6.25
24	\$9.00	\$7.30	\$6.60	\$6.40	\$6.10	
30	\$8.70	\$7.05	\$6.40	\$5.95	\$5.85	
12' High Eave Frame Buildings						
		Length (Ft)				
		20	30	40	50	60
Width (Ft)	10	\$10.80	\$9.40	\$9.00	\$8.70	\$8.60
	12	\$11.10	\$9.00	\$8.35	\$7.95	\$7.80
	14	\$10.70	\$8.20	\$7.50	\$7.15	\$6.85
	16	\$9.90	\$7.95	\$7.30	\$6.85	\$6.60
	18	\$9.50	\$7.60	\$6.90	\$6.50	\$6.20
	20	\$9.40	\$7.60	\$6.90	\$6.50	\$6.20
24	\$9.40	\$7.40	\$6.75	\$6.40	\$6.10	
30	\$9.15	\$7.15	\$6.40	\$5.95	\$5.95	

Prod.No.	46"(Nom.) Wide Panels are manufactured to size with 1# Density EPS Insulated Solid Core.	Max Height	Thick-ness	Net / Sq.Ft.	R-Value
275GWB	.019"/26 Ga. Galvalume White painted stucco embossed Both sides	18	2-3/4"	\$4.50	R-13
400GWB	.019"/26 Ga. Galvalume White painted stucco embossed Both sides	24	4"	\$4.95	R-19
500GWB	.019"/26 Ga. Galvalume White painted stucco embossed Both sides	30	5"	\$5.25	R-23.5
600GWB	.019"/26 Ga. Galvalume White painted stucco embossed Both sides	36	6"	\$5.50	R-27