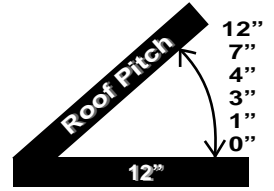
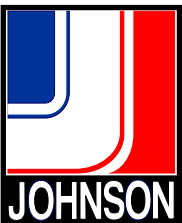


INSOLRAE[®]

ECO STRUCTURES



**CAMPBELL RESIDENCE
RIVERTON, NJ 08077**



SUPPLIED AND DESIGNED BY:

JOHNSON BUILDING SYSTEMS, INC.
975 JAYMOR RD
SOUTHAMPTON, PA 18966-3854
Tel: (215) 673-6050
Fax: (215) 322-2076

1-800-445-7249

**PERMANENT OR TEMPORARY
SHIP AND ERECT ANYWHERE**

E-Mail: Sales@JohnsonEnergyGroup.com
www.JohnsonBuildingSystems.com



ECO STRUCTURES

TIMBER LINK TILT-UP FRAMING SYSTEM

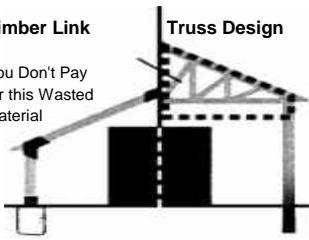
6X6 TIMBER LINK EASYWARE (HARDWARE)

Enables you to construct a simple, strong and spacious building, faster, easier, and for less money. Timber Link provides the strength of Post and Beam. Timber Link joins 6" x 6" solid wood members or 2"x 6" engineered laminated timbers meeting local building code compliance.



Timber Link

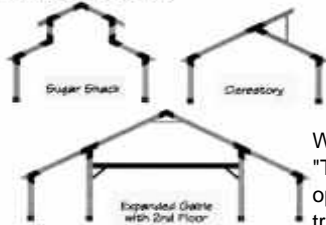
You Don't Pay for this Wasted Material



Truss Design

The two most popular buildings have a Gable or Gambrel roof. Clear span buildings up to 30ft wide (by any length) can be erected using either one of these designs. Our 6 sided and 10 sided structural wall designs are also available.

OPTIONAL DESIGNS



SAVES MONEY SPACE LABOR

With Structural "T-s" and optional Steel truss beams allow for second floors.

Standard 7:12 Gable 30° Roof



For Gambrel 36° Roof Pitch Use 5 Sets of L-Bo's 4:12 Pitch



4:12 Available for residential with lower gable roof 36°/18° Pitch

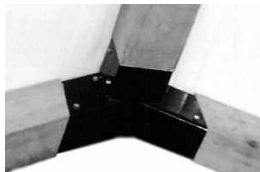
.120 WHITE ALUMINUM
BASE CHANNEL & ANGLE
4" A-44 X 16' 3" A-46 X 16'



**No Moisture!
No ROT!
No Waste!**

Timber Link TILT-UP Easyware

Made of 3/16" carbon steel black powder coated for moisture protection. Products carry written transferable lifetime warranty and come with an easy to follow, illustrated field manual, for the first time or professional builder.



Solid Core Structural (SIPS) Insulated Panels



Other Bay Options Include Steel Truss Frames with 8x8 Timber Support. Works the same way as our 6x6 Timber Link but with a larger clear span of 40 feet.



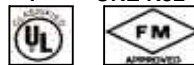
IMPs/SIPs WALL AND ROOF DECK

SHADOWLINE
26 Ga. STUCCO EMBOSSED METAL-SHIELD PANEL SYSTEM

- 2-3/4" EPS R12
- 4" EPS R18*
- 5" EPS R22*
- 6" EPS R27

*Florida Approval
FL6787 / FL9685

- 2-3/4" URE R22
- 4" URE R32



CLASS 1 FIRE RATED
URETHANE INSULATED PANELS
standard 45' Coverage
FM-4880/ASTM-E84
Passed testing Class 1
Fire rating



TIMBER LINK - Basic Parts for 4/12 or 7/12 Roof Pitch. (8x8 available)

Description	Where to Use
L-BO (7:12 Pitch) 30°	Peak and Eave
(Pass-Thru) "T" Same angle as L-BO	Expanding Spans
(Structural) "T" Same angle as L-BO	Expanding Spans
L-BO (4:12 Pitch) Gambrel 36°	Peak and Eave
L-BO (4:12 Pitch) Gable Eave 18°	Eave Only
Hinged Frame Anchor (6"x 6")	L-Bolts Included
Rigid Frame Anchor (6"x 6")	L-Bolts Included
Hinged Frame Anchor (Pole Mount)	L-Bolts Included
Hinged Frame Anchor (Skid Mount)	L-Bolts Included
Floor Hanger for Steel or Wood Beams	2nd Floor
Upper Shed Roof Hanger	Extend Roof
Lower Shed Roof Hanger	Extend Roof
Timber Trough (Add For)	Directional Support