



Structural Insulated Panels

Product Information

Key Product Features:

- Lightweight Component System
- Durable, Solid Core Panel Construction
- Simple T&G Installation
- Excellent Load Span Capabilities
- Easy to Install Slip Joint Edge Connection
- Energy Efficient and Cost Effective
- Clean and Attractive Appearance
- Promotes Innovative Design Solutions
- Uniform R-Value Across the Entire Solid Core Panel
- Termite-Resistant and Moisture-Resistant Foam Core
- Conforms to Class "B" Fire Safety Standards

Slip Joint Panel System:

The Slip Joint Panel System is recognized as one of the most effective panel joining systems in the industry. Panels slip into place every time, making installation easy. With Insulated Panels, the slip joint system forms the edges of both metal skins which are then bond welded to the Expanded Polystyrene (EPS) core under pressure, using a two-part thermosetting adhesive.

PROVIDING INSULATED PANELS FOR THE FOLLOWING FACILITIES

- Food & Drink Processing
- Cleanrooms
- Pharmaceuticals
- Temperature-Controlled Facilities
- Warehouses
- Portable Buildings
- Packaging & Distribution Centers
- Animal Confinement
- Supermarkets
- Freezers & Coolers
- Cheese Plants
- Meat Processing
- Fishery Processing
- Milk Processing & Storage
- Wineries
- Breweries
- School & Daycare Facilities
- Residential Housing
- Equine Stables
- And Many More...

TEMPORARY OR PERMANENT



INSOLRAE BUILDING PRODUCTS DIV.

975 Jaymor Rd.

Southampton, PA 18966-3854

BUS: (215) 673-6050 • FAX: (215) 322-2076

1-800-445-7249

Email: sales@JohnsonEnergyGroup.com



Structural Insulated Panels

PFF INSULATED PANEL SYSTEMS

Insulated Panels are a continuous line of stressed skin panels manufactured on an insulated panel production line. Panel Insulated cores are self-extinguishing grade Expanded Polystyrene (EPS) Class SL, as manufactured by EPS block molders and bond welded under pressure to Akzo Nobel CERAM-A-STAR® 950U pre-painted Galvalume metal facings both sides of panel.

PROFILES

Precision Panels are available with a flat surface finish or low profile of 0.75mm depth to either surface. The Slip Joint Panel is a T&G System incorporated into the edges of both metal skins for easy installation.

PANEL WIDTH

- Approximately 45.5"(1140 mm)

PANEL THICKNESS

- 2" (50mm) to 12" (300mm) in multiples of 1" (25mm)
- Excludes: 7", 9" & 11"

STEEL SKIN THICKNESS

- Sheet thickness can range from 0.018" to 0.022" for either surface skin

FRP (FIBERGLASS REINFORCED PLASTIC) TEXTURED SKIN THICKNESS

- 0.090" thick
- Optional Interior Finish
- Colors as Selected



COLORS

The standard color is medium gloss "USDA White". There are other colors available in the Akzo Nobel CERAM-A-STAR® 950U family of colors as selected with minimum quantities.

ACCESSORIES

The Precision Panel system is enhanced by a range of components for individual projects. Galvalume flashings and cappings can be folded in lengths to match Akzo Nobel CERAM-A-STAR® 950U. Other accessories include custom-made doors, aluminium extrusions, nylon mushroom bolts, screws, rivets, flexible sealants, Fab Loc fasteners and expandable foam froth packs.

INSTALLATION, DELIVERY & WARRANTY

- Fully warranted product performance
- Precision Panels are custom-packaged for domestic delivery via flatbed truck & for offshore delivery via closed container
- Technical support 800-445-7249
- Call for information on installation

INSOLRAE BUILDING PRODUCTS DIV.

975 Jaymor Rd.
Southampton, PA 18966-3854
BUS: (215) 673-6050 • FAX: (215) 322-2076
1-800-445-7249
Email: sales@JohnsonEnergyGroup.com



Structural Insulated Panels

INSOLRAE - EPS Structural Insulated Panel System Panel Technical and Test Data Table

Insulation Core Properties by Thickness @ Average Temperature +75° F

Inches/Millimeters	2"(50mm)	4"(100mm)	6"(150mm)	8"(200mm)
R-VALUE (ASTM C 1363-05)	8.77	17.53	26.3	35.07
Water Vapor Transmission (ASTM E 96)	all sizes transmit 2.0 – 5.0 perms per inch at all temperatures			
Typical Foam Core Density	2lb	1lb	1lb	1lb
Composite Panel Weight (per sq ft)	2.3lb	2.3lb	2.49lb	2.64lb
Panel Facing Thickness	.019 thick G-90 Galvanized Steel or AZ-50 Galvalume			

Certified Test Data for PFF Panels	2"(50mm)	4"(100mm)	6"(150mm)	8"(200mm)
Florida Product Approved	N/A	FL 6797	FL 9685	N/A
ASTM E1886/1996 Tensile Strength & Large Missile Impact	N/A	PASSED	N/A	N/A
ASTM E1886/1996 Cyclic Static Air Pressure Loading	N/A	PASSED	N/A	N/A
SBCCI/SSTD 12-99 Non-Porous Impact Protective Membrane Integrity	N/A	PASSED	N/A	N/A
ASTM E1592 Wind Uplift for Roof	N/A	N/A	PASSED	N/A
ASTM E 108 Classification "B" Roofing Assembly - Fire Test	N/A	N/A	PASSED	N/A
UL 1715 (UBC 26-3) Wall Corner Assembly - Fire Test	N/A	N/A	PASSED	N/A
ASTM E 72 Racking Load Test with Corner Condition	N/A	PASSED	N/A	N/A
ASTM E 90 Acoustical STC Rating	N/A	N/A	N/A	N/A

PRECISION FOAM FABRICATORS - EPS TECHNICAL AND TEST DATA

INSOLRAE BUILDING PRODUCTS DIV.

975 Jaymor Rd.

Southampton, PA 18966-3854

BUS: (215) 673-6050 • FAX: (215) 322-2076

1-800-445-7249

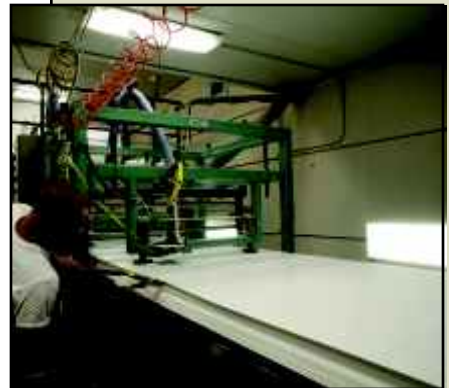
Email: sales@JohnsonEnergyGroup.com



Structural Insulated Panels

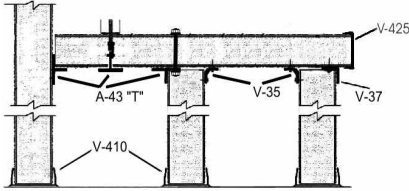
Technical Specification Sheet

OUR PRECISION PANELS ARE USED IN THE FOLLOWING CONSTRUCTION APPLICATIONS.

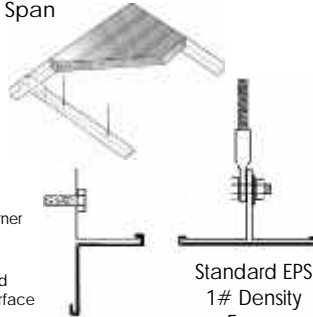


CONSTRUCTION DETAILS:

SUSPENDED CEILING "T" SYSTEM



8', 10' & 12' Clear Span resulting in less infiltration and continuous vapor barrier.



Optional: V-43 x 8' T Bar
PVC Flat Cover
V-42 Inside Corner
PVC Plastisol
4-8 mill finish
USDA accepted on exposed surface of panel

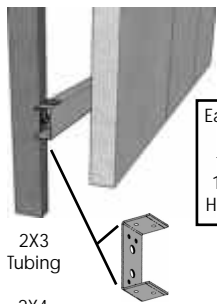


* Electrical Chase Available

.090" FRP CLASS "A" FIRE RATED AVAILABLE

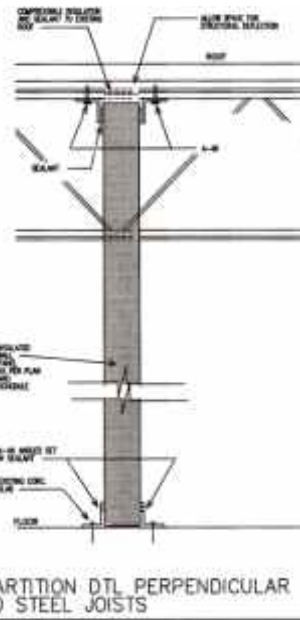


HD GIRTS AND PURLINS 4" A-44PG PURLIN AND GIRT CLIPS



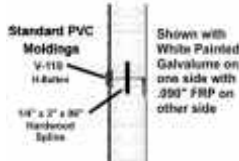
Eave 8' to 12' High

2X3 Tubing
2X4 Tubing Eave 16' High

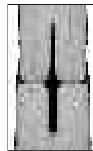


PARTITION DTL PERPENDICULAR TO STEEL JOISTS

TOP-VIEW



F9E4G



GBE4

- 4" A-44PG X 12'
- 4" A-44 X 12'
- 3" A-46 X 12'
- 2" A-40 X 12'



DEALER REPRESENTATIVE: